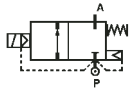


## 2/2 WAY PILOT OPERATED PISTON VALVE, G 1/4" ÷ G 1/2"



**normally closed**

**TYPE: D634/635/636**

### TECHNICAL SPECIFICATIONS

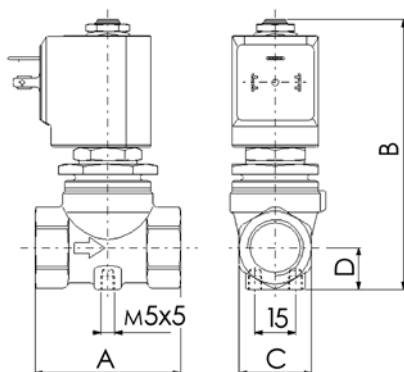
Media: water, steam
Media temperature: +80°C ... +180°C
Ambient temperature: -10°C ... +70°C
Body material: brass (CW617N EN 12165)
Orifice material: stainless steel (AISI 303 EN 10088-3)
Operator material: stainless steel
Seal material: PTFE
Coil power: AC 18VA (holding)
AC 36VA (inrush)
DC 14W
Protection class: IP 65 (with connector)



### OPTIONS

Electroless nickel plating treatment (Ex. code D636DTTK)

SELECTION TABLE	VALVE	G connection	Nominal Diameter	Flow rate kv	OPD		COILS		
					min	max	class "H" only		
	Code	-	(mm)	(l/min)	(bar)	AC	DC	Code	(Volts/Hz)
	D634DTT	1/4"	10.0	21	0.3	10	10	7251	24/dc
	D635DTT	3/8"	10.0	24	0.3	10	10	7201	24/50 - 60
	D636DTT	1/2"	10.0	25	0.3	10	10	7401	110/50 - 120/60
								7601	200/50 - 220/60
								7701	230/50 - 240/60



### DIMENSIONS & WEIGHTS

G connection	A	B	C	D	weight
	(mm)	(mm)	(mm)	(mm)	(Kg)
-	54	100	Hex. 17	15.5	0,465
1/4"	54	100	Hex. 17	15.5	0,465
3/8"	54	100	Hex. 17	15.5	0,465
1/2"	54	100	Hex. 17	15.5	0,465