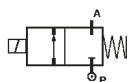


2/2 WAY DIRECT ACTING SOLENOID VALVE, G 1/8" - G 1/4"



normally closed

TYPE: D262/263

TECHNICAL SPECIFICATIONS

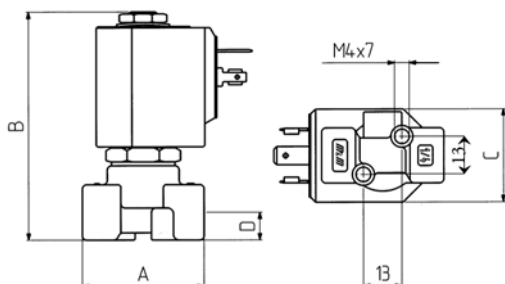
Media: water, oil, air
Media temperature: -10°C ... +130°C
Ambient temperature: -10°C ... +50°C
Body material: brass (CW617N EN 12165)
Orifice material: stainless steel (AISI 303 EN 10088-3)
Operator material: stainless steel
Seal material: FKM
Coil power: AC 18VA (holding)
AC 36VA (inrush)
DC 14W
Protection class: IP 65 (with connector)



OPTIONS

Normally open (Ex. code RD263DVG)
Manual override (Ex. code D262DVHM)
EPDM seal for air and hot water MAX 120°C (Ex. code D262DEH)
RUBY seal -10°C +180°C for high temperature with class "H" coils (Ex. code D262DRC 7201)

SELECTION TABLE	VALVE	G connection	Nominal Diameter	Flow rate kv	OPD		COILS		
	Code	-	(mm)	(l/min)	min	max	Code	(Volts/Hz)	
	D262DVA	1/8"	1.0	0.5	0	30	30	7250	24/dc
	D262DVC	1/8"	1.5	1.3	0	24	24	7200	24/50 - 60
	D262DVG	1/8"	2.5	3.4	0	18	16	7400	110/50 - 120/60
	D262DVH	1/8"	3.0	4.5	0	15	8	7600	200/50 - 220/60
	D263DVC	1/4"	1.5	1.3	0	24	24	7700	230/50 - 240/60
	D263DVG	1/4"	2.5	3.4	0	18	16		
	D263DVH	1/4"	3.0	4.5	0	15	8		
	D263DVL	1/4"	4.0	6.0	0	8	5		
D263DVN	1/4"	5.0	7.5	0	5	2,5			
D263DVP	1/4"	6.0	8.5	0	3	1			



DIMENSIONS & WEIGHTS

G connection	A	B	C	D	weight
-	(mm)	(mm)	(mm)	(mm)	(Kg)
1/8"	40	77.5	32	11	0.26
1/4"	40	77.5	32	11	0.26